

# HELSINKI

June 15th-19th, 2024

B | A | L | T

BRITISH ARCHITECTURAL LIBRARY TRUST



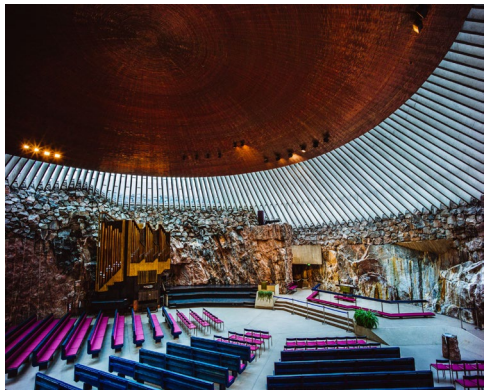
# DESTINATION HELSINKI

Helsinki is Finland's administrative, economic, scientific and cultural nexus. As its capital and largest city, Helsinki is the country's economic and logistical center and its historic growth engine. Helsinki's rich and complex history in the Baltic region spans centuries. Founded in 1550 as a Swedish port city to rival the Hanseatic League, conquered by Russia in 1808 and achieving independence only in 1917, Helsinki has had a strategic role in geopolitics to the present day. Well known for its vital artistic heritage, Helsinki has been a renowned global leader in modern architecture, design and culture during a century of great social and political change.

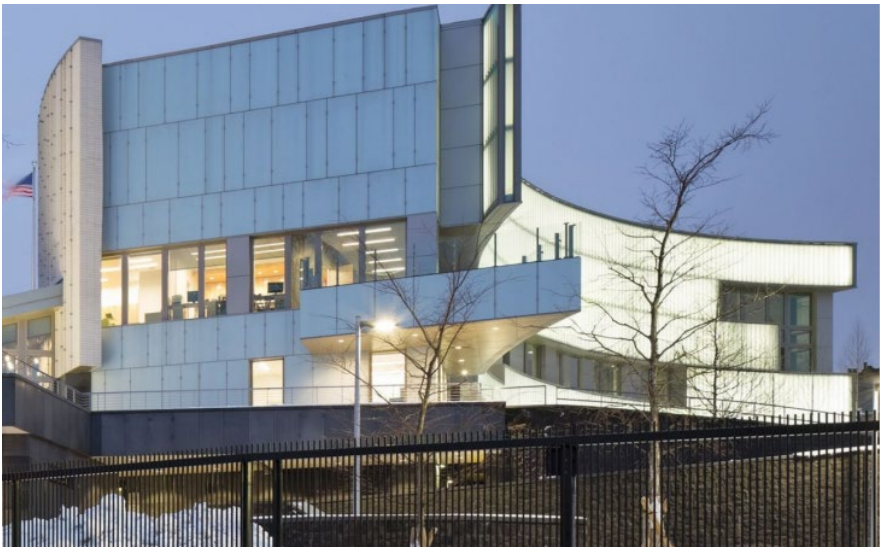
The British Architectural Trust (BALT) invites you to explore the history of this extraordinary city in the company of those who will place its architectural legacy in context, from the city's great examples of Nordic Classicist architecture to the remarkable work of groundbreaking architects such as Eliel Saarinen and Alvar Aalto to the exciting contemporary projects of architects and industrial designers in Finland today.











# ITINERARY

## DAY 1, Arrivals /June 15th, 2024

- Arrivals, airport transfers (not included) and check in hotel St George
- 17:00 Get together at the Wintergarden of hotel St George
- 18:00 Walking transfer (10 min.)
- 18:30 Dinner at private Venue "Kansallissali" in Pohjola Building, designed by Herman Gesellius, Armas Lindgren and Eliel Saarinen  
- Introduction to Finland by guide Sari Saarinen and PhD Timo Tuomi  
Walking transfer back to hotel (10 min.)

## DAY 2, Helsinki day / June 16th, Sunday

- 09:00 Walking transfer along the Esplanade Park to Senate Square (15-20 min.)
- 09:30-12:30 Guided Walking Tour "History & Architecture" in Helsinki
- Senate Square (historic centre, neoclassical architecture)
  - Katajanokka district (Art Nouveau buildings)
  - Pohjola Building (facade)
  - The Lundqvist Building (facade)
  - Helsinki Railway Station & hotel Grand Central (tour inside)
  - Kiasma Art Museum's passage
  - Oodi Library (guided tour inside)
- 12:30-13:30 Lunch at local restaurant
- 13:30-14:30 Continue Walking Tour
- Lasipalatsi Square and visit to Kamppi Chapel
- 14:30 Leisure time
- 17:45 Bus transfer from hotel to harbour (15 min)
- 18:00 Archipelago cruise and dinner on a yacht (3 h)
- 21:00 Bus transfer back to hotel (15 min.)

## DAY 3, Alvar Aalto day, June 17th

- 08:40 Bus transfer to Kulttuuritalo (15 min.)
- 09:00-09:45 Visit to Kulttuuritalo
- 09:45 Bus transfer to Alvar Aalto's home and atelier (15 min.)
- 10:00-12:15 Visit to Alvar Aalto's home and atelier in Helsinki (private, in two groups)
- 12:30-13:30 Lunch at local restaurant
- 13:30 Bus transfer to Paimio Sanatorium (1,5 h)
- 15:00-16:30 Guided tour at Paimio Sanatorium
- 16:45 Bus transfer back to Helsinki (1,5 h)
- 18:15 Arrival in Helsinki
- 18:15 Leisure time
- 19:30 Walking transfer from hotel to Artek Store (5 min.)
- 19:40 Pre-dinner visit to Artek Brand Store (private, 45 min) **new timing TBC!**  
Walking transfer (5 min.)
- 20:30 Dinner at restaurant Savoy  
Walking transfer back to hotel (5 min.)



# ITINERARY

## DAY 4, Eliel Saarinen day, June 18<sup>th</sup>

- 08:45 Walking transfer to Finnish Architecture Museum (10 min.)
- 09:00-11:30 Visit to Finnish Architecture Museum and its Archives (private)
- 11:30 Bus transfer to Hvitträsk (40 min.)
- 12:15 Lunch at local restaurant
- 13:30 -15:00 Tour at Hvitträsk (private)
- 15:00 Bus transfer (25 min.) to designer Yrjö Kukkapuro's atelier (25 min.)
- 15:30-16:30 Visit to Yrjö Kukkapuro's atelier (private)
- 16:30 Bus transfer back to Helsinki (30 min.)
- 17:00 Arrival in Helsinki
- 17:00-18:30 Cocktails at U.S. Embassy with Douglas T. Hickey, U.S. Ambassador to Finland, and his wife Dawn Ross
- 18:30-18:45 Bus transfer back to hotel
- 18:45-19:30 Leisure time
- 19:30-19:50 Bus transfer from hotel to Temppeliaukio "Rock" Church
- 19:50-20:50 Visit with miniconcert at Temppeliaukio "Rock" Church (private 1 h)
- 20:50-21:10 Bus transfer to restaurant Nokka (20 min.)
- 20:15-- Dinner at restaurant Nokka
- Bus transfer to hotel St George (15 min.)

## DAY 5, June 19<sup>th</sup>

- 08:45 Walking transfer to Marimekko Store (10 min.)
- 09:00 Visit Marimekko brand Store (private, 50 min.)
- 10:00 Walking transfer to Amos Rex Art Museum (10 min.)
- 10:15-11:15 Tour at the Amos Rex Underground Art Museum (private)
- 11:15 Walking transfer to St George hotel (10 min.)
- 11:30 End of the trip
- Check out St George hotel by 12:00.
- 14:05 AY/British Airways flight from Helsinki to London, arrival at 15:10 local time
- 16:00 AY/British Airways flight from Helsinki to London, arrival at 17:05 local time
- 19:30 AY/ British Airways flight from Helsinki to London, arrival at 20:40 local time

*Timo Tuomi is participating as an expert in the program until 17:00.*



BRITISH ARCHITECTURAL LIBRARY TRUST

# ACCOMMODATION

# HOTEL ST. GEORGE 5\*

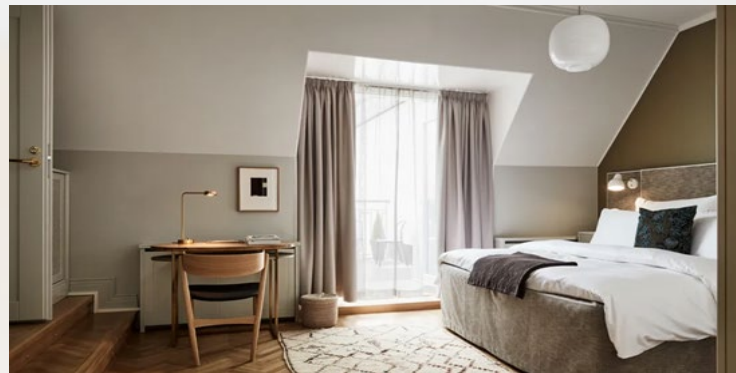
Hotel St. George is a full-service luxury hotel with holistic care for a healthy mind, heart and body. Situated by the beautiful Old Church Park in the heart of Helsinki, all 148 rooms and five suites are individually decorated offering moments of rest and tranquility. The hotel inspires with its boldly realized art collection and world-class design.

Hotel St. George dares to be different by having an art gallery in a hotel; visitors encounter a tremendous white dragon the moment they enter the hotel.

The Local Livingroom Wintergarden menu brings intensive, dimensional tastes offering an Afternoon Tea, St. George Wine Tasting and zero waste cocktail experiences. St. George Bakery & Bar serves the freshly baked bread, sweet pastries, sandwiches, salads, smoothies, wine - and of course fantastic coffee.

Besides treatments and massage offered in the spa with hot saunas and a pool, the Playground gym designed by Hints Performance is open 24/7.

<https://www.stgeorgehelsinki.com/>







BRITISH ARCHITECTURAL LIBRARY TRUST

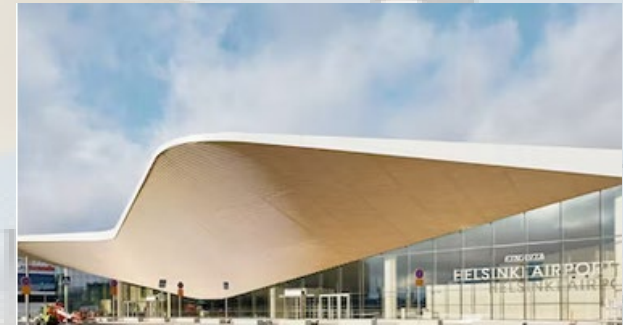
# PROGRAM

# DAY 1- ARRIVAL

Your architectural journey in Helsinki begins already at the airport when you arrive to the new departures and arrivals building of Helsinki Airport. The first thing the arriving passengers see after having passed through customs, is the "Luoto" nature diorama, a freeform installation with trees, shrubs and stones in a large cor-ten planter. "Luoto" combines the characteristics of Finnish nature with Japanese garden art.

In 2016, the airport operator Finavia launched a design competition for the expansion and modification of terminal 2. The competition task included relocating the departures and arrivals halls to a new building so that the existing departures hall of terminal 2 could be turned into gate areas for Schengen area flights. The 43,000 SqM departures and arrivals building comprises two distinct volumes; the first defined by its wooden ceiling, the second by its blue color.

In addition to the departures and arrivals halls, the first volume also contains a ground travel center, and the second the areas for security control, customs and baggage reclaim. As the new building connects directly to the existing terminal 2, it follows the traditional logic of separating the flows of departing and arriving passengers onto different levels. For years, architects have aimed at creating illusions of flying and of overall lightness with their designs for terminal roofs and ceilings. This is true also at Helsinki Airport – the ceilings of the older construction phases are seemingly lightweight and tectonic. Even the ceiling of the new departure hall plays with the concept of lightness but combines it with extreme weight. The use of steel structures has enabled the construction of both the column-free departures hall and the massive entrance canopy. These structures are hidden inside the ceiling made of prefabricated timber units. Its thickness is noticeable when looking at the deep recess of the skylight in the center of the check-in area. The plasticity of the overall form however makes the ceiling seem as if it was floating in the air. The flowing shapes of the spruce boards resembling contour lines turn it into an upside-down version of a three-dimensional map that leads the passengers' thoughts towards the sky above the runway.





# DAY 1- DINNER AT KANSALLISSALI

Kansallissali hall is located in the city centre, in one of Helsinki's best known art nouveau style buildings, the Pohjola building. The majestic stone building was designed by Herman Gesellius, Armas Lindgren and Eliel Saarinen to house the Pohjola fire insurance company, and stood ready in 1901. Today the Kansallissali hall on the 2nd floor is a space for events, banquets and meetings.

During dinner, Sari Saarinen and Timo Tuomi will guide you through Finnish history and the present day.

**Sari Saarinen** is not just anyone among Finland's 14,768 residents with the surname Saarinen, but a professional guide who happens to be a descendant of the architect Eliel Saarinen.

Doctor of Philosophy, **Timo Tuomi** is the former director of the Espoo City Museum KAMU. He has also worked as a Professor of Art History at Helsinki University, and as Research Director at the Museum of Finnish Architecture. He has written several books on Finnish architecture and architects, such as the double biography of father and son, Eliel and Eero Saarinen, which he is currently editing and translating into English. In 2019 Dr Tuomi was granted a Badge of Merit in Architecture by the Finnish Association of Architects, SAFA.



# DAY 2 - WALKING TOUR "HISTORY & ARCHITECTURE"

This 3-hour architectural-themed walking tour through Helsinki takes you on a fascinating journey from the past to the present, showcasing the city's architectural evolution and its enduring commitment to innovative and inspiring design. The tour is conducted by a professional guide who is specialized in architecture.

The tour begins from the historical part of Helsinki, **the Senate Square**, which is dominated by four buildings designed by Carl Ludvig Engel (1778-1840): Helsinki Cathedral, the Government Palace, the main building of the University of Helsinki and the National Library of Finland.

**Katajanokka** is a district in Helsinki located on the eastern side of the city center. Most visitors will recognise its most famous landmark, the Uspenski Cathedral, but may easily overlook the area's incredible Art Nouveau architecture that can be found just beyond the Cathedral. There are several buildings that have been designed by Eliel Saarinen, Herman Gesellius & Armas Lindgren. Katajanokka also hosts the former Stora Enso Headquarters, which is designed by Alvar Aalto.

On the way towards the Helsinki Railway Station, we stop outside the iconic **Pohjola Insurance Building**, designed by Eliel Saarinen. The building is a splendid example of National Romantic architecture. Admire its intricate façade adorned with beautiful details and sculptures, showcasing Finland's cultural and mythological motifs.

Next, stop outside **the Lundqvist Building**, designed by Selim A. Lindqvist. It is a remarkable representation of Art Nouveau/Jugend style. Marvel at the elegant curves, ornate decorations, and intricate ironwork that epitomize this unique architectural movement.

Next stop is the famous **Helsinki Railways Station and hotel Grand Central**, the masterpiece of Eliel Saarinen.





## DAY 2 - HELSINKI RAILWAY STATION & HOTEL GRAND CENTRAL

In 1904, Eliel Saarinen won the architectural competition to design **Helsinki's central railway station**. Saarinen's national-romantic entry caused a huge emotional uproar among Finnish architects. Some of Saarinen's colleagues considered his proposal backward-looking and insisted that as the railway station symbolized a new, modern era, the architecture should do the same.

The Central Railway Station and its administrative buildings are among Eliel Saarinen's most important achievements in Finland. The station was finally completed in 1919. A few years later, after winning the second prize in the competition to design the Chicago Tribune skyscraper, Eliel Saarinen moved permanently to the United States. In 2013, the BBC listed Saarinen's railway station among the ten most beautiful railway stations in the world.

**Scandic Grand Central Helsinki** is located in the old administrative buildings of the Helsinki Central railway station. Many design details are inspired by Eliel Saarinen's original plans and applied to modern features such as street level and top floor arch windows. The wall materials imitate the Railway Station's facade with a mix of concrete and red granite to add to the building's grand appearance.

The restoration of the administrative buildings was done by Architects Soini & Horta in collaboration with the Finnish Heritage Agency. The old corridors, staircases and the original still remaining furniture were carefully restored. There are still layers of different eras visible, as well as surprising details. The hotel interior has an old-fashioned charm with modern interiors. The northern wings of the original building are now connected by a modern new building, that utilizes Saarinen's architecture and design language. In addition to modern hotel décor, you will see original details, original refurbished furniture, and light fixtures. You can really feel Saarinen's spirit at Scandic Grand Central Helsinki.



## DAY 2 - WALKING TOUR "HISTORY & ARCHITECTURE"

The tour continues to the **Kiasma Art Museum's passage**, where contemporary architecture merges seamlessly with artistic expression. Experience the dynamic interplay of light, space, and design as you traverse this captivating passage. Kiasma was designed by Steven Holl.

Next, embark on a guided tour inside the **Oodi Library**, a modern architectural gem that epitomizes contemporary design principles. Discover its innovative spaces, cutting-edge technology, and sustainable features, all designed to foster creativity, learning, and community engagement.

The architectural competition for the Helsinki Central Library, held in 2012–13, received 544 entries from around the world. The winning entry "Käännös" [swerve] was by ALA Architects, who have also designed Helsinki Airport Extension. In terms of structural engineering, this sculptural library is one of the most demanding projects carried out in Finland. The whole building is supported by a huge steel arch structure often used in bridges, which enables large open spaces without bearing walls.

Oodi is a striking building with its glass and steel structures and wooden facade, its design a combination of traditional and contemporary flavours. The energy-efficient library is an impressive calling card for Finnish architecture. Apart from the top floor, Oodi's facade is made entirely from wood, which softens the general appearance of the architecture around Töölö Bay. The wood used for the exterior wall is spruce. The building is an inspiring and highly functional addition to the urban life of Helsinki and the Töölölahti – Töölölahti Bay area.

After lunch in local restaurant, you will visit Lasipalatsi Square and Kamppi Chapel.





# DAY 2 - WALKING TOUR "HISTORY & ARCHITECTURE"

Amos Rex has its origins in the Amos Anderson Art Museum, which since 1965 has been Helsinki's leading private museum. To meet changes in the practice and display of contemporary art in the 21st Century, the trustees of the Amos Anderson Art Museum concluded that a new venue would be better suited for providing new art experiences than the museum's existing accommodation in converted newspaper offices. The nearby Lasipalatsi building, one of Finland's best-preserved examples of 1930s functionalist architecture was identified as a new home for the museum.

The Lasipalatsi building has been comprehensively refurbished as part of the project, with special care given to preserve original features that include the first external neon lighting in Finland. Detailed research from historic sources as well as analysis of material on-site, conducted in partnership with the Helsinki City Museum, allowed JKMM Architects to recreate a palette of materials and colours that is true to the original design.

From the foyer of the refurbished Lasipalatsi building, visitors descend a staircase past a picture window that affords views over the **Lasipalatsi square**, into the basement galleries. The roof of the new gallery is formed by a series of domes with angled roof lights that frame views of the surrounding buildings and allow exhibitions to be lit with natural light if the curators choose. The shape of the domes is expressed in the topography of the newly landscaped public square which sits above the galleries, as a series of gently rolling forms clad in concrete tiles. At street level, a new urban square has been created with a unique identity. The domes form an undulating landscape for people to enjoy, especially children.

The Amos Rex Arte Museum will be visited later during the trip.

Nearby **Kamppi Chapel** is a small chapel in busy Kamppi district. It is also known as the "Chapel of Silence" since it is intended to be a place to calm down and have a moment of silence in one of the busiest areas in Finland. With its curved wood facade, the small sacral building flows into the city scape. Simultaneously the chapel's gently shaped interior space embraces visitors and shields them from the bustling city life outside. The sacral space is a calm space, in which the lively neighborhood seems distant. Light touching down on the curved surface and the feeling of warm materials define the space. The chapel's inner walls are made of thick oiled alder planks. The furniture is also made of solid wood.





## DAY 2 - DINNER CRUISE ON PRIVATE YACHT, HELSINKI ARCHIPELAGO

Did you know that there are about 300 islands in the Helsinki area?

The archipelago is beautiful all year round and discovering the city from the sea view is an unforgettable experience. A relaxed cruise with a beautiful yacht is a great opportunity to enjoy the landscapes, see the beautiful Helsinki archipelago and admire Helsinki from the sea. During 3 hour cruise you can see e.g. Suomenlinna SeaFortress, Lonna Island and cruise route can be planned to the East or to the West.

During the cruise the experienced chef Karina offers high-quality dining experiences with a professional touch. You get to experience fresh and exciting flavors, impressive portions and excellent service.





# DAY 3 – KULTTUURITALO, HELSINKI

The Finnish Communist Party asked Aalto in 1952 to draw up plans for a building complex combining the party headquarters, association facilities, and a cultural centre.

The sketches did not take definitive form until 1955, when construction finally got under way. The house was inaugurated in 1958. Aalto tackled the job as three separate assignments, giving the building a tripartite structure. Originally the whole complex was to be faced with red brick, but the plans later changed. Aalto built a rectangular, copper-clad office wing with five storeys above ground and a large, free-form auditorium of red brick connected by a lower wing, forming a small piazza.

The whole complex is held together by a column-borne copper canopy that runs alongside the street for 60 metres and forms a portico to the little piazza, which features a fountain by Wäinö Aaltonen in the form of an open hand.

According to Aalto the form of the House of Culture auditorium was dictated by acoustic considerations: "The various uses of the room require first-class acoustics, which is the reason for the form, a concrete helix combined with wood and brick. Specially designed wall and ceiling surfaces both absorb and reflect sound waves. Substitute wall panels can be used for various acoustic needs" for an empty or full house, for concerts or congresses – without disrupting the architectural rhythm. Aalto's hopes were fulfilled: the House of Culture became known for its excellent acoustics and is used frequently for concerts as well as orchestra rehearsals and recordings.

The monolithic exterior of the auditorium wing, which closely follows the helical form of the interior and is almost windowless, displays variously bent brick surfaces, which could not have been built without the specially manufactured standard wedge-shaped brick invented by Aalto for the purpose.





## DAY 3 - ALVAR AALTO'S HOME & STUDIO, HELSINKI

In 1934, Aino and Alvar Aalto acquired a site in almost completely untouched surroundings at Riihitie in Helsinki's Munkkiniemi district. They started designing their own house which was completed in August 1936.

The house is divided into a workspace used by Alvar Aalto's architectural firm and the couple's private residence. Simple and natural materials soften the design language of the building's modern architecture. Aalto's office was located in this building until 1955.



# DAY 3 - ALVAR AALTO– PAIMIO SANATORIUM, PAIMIO

The building completed in 1933 as Paimio Sanatorium was of key importance to the international career of architects Alvar and Aino Aalto. Together with Vyborg (Viipuri) Library, completed two years later, it gave the Aaltos an international profile. Finnish architecture was no longer merely the receiver of influences from outside.

The building, constructed on the basis of their win in an architectural competition resolved in 1929, was groundbreaking. A tuberculosis sanatorium was particularly suitable for a building which followed the tenets of the new Functionalism, where bold concrete structures and state-of-the-art building services were inseparable elements of architecture and practicality.

The entire building complex, grouped together in several parts according to use, was constructed in accordance with Aalto's philosophy, right down to the smallest details of the furniture. As far as the loose furniture was concerned, a good many items designed specifically for the sanatorium were used, as well as standard products which were already available. According to the idea of standardization, which belonged to the spirit of the times, these items were also planned for use elsewhere.

The pieces of furniture became key products for Artek, which was founded in 1935. The bent plywood Paimio chair in particular has become an international design icon. On the other hand, the three-legged stool, which is the same age as the sanatorium, was not included in the first phase of the furniture supplied by the Otto Korhonen furniture works. The furniture in the patients' rooms was dominated by tubular-steel construction, soon to be spurned by the Aaltos.



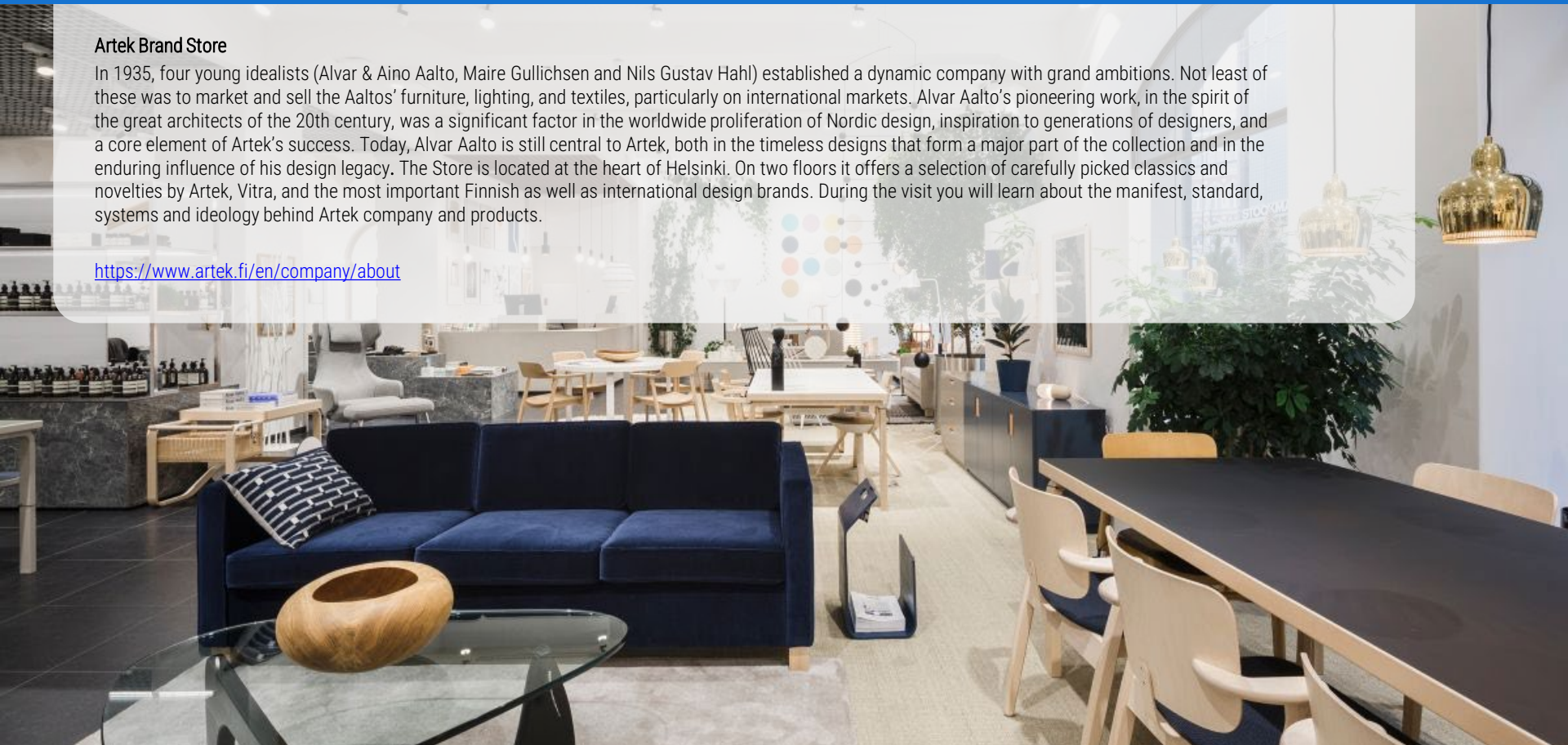


# DAY 3 - ARTEK BRAND STORE IN HELSINKI

## Artek Brand Store

In 1935, four young idealists (Alvar & Aino Aalto, Maire Gullichsen and Nils Gustav Hahl) established a dynamic company with grand ambitions. Not least of these was to market and sell the Aaltos' furniture, lighting, and textiles, particularly on international markets. Alvar Aalto's pioneering work, in the spirit of the great architects of the 20th century, was a significant factor in the worldwide proliferation of Nordic design, inspiration to generations of designers, and a core element of Artek's success. Today, Alvar Aalto is still central to Artek, both in the timeless designs that form a major part of the collection and in the enduring influence of his design legacy. The Store is located at the heart of Helsinki. On two floors it offers a selection of carefully picked classics and novelties by Artek, Vitra, and the most important Finnish as well as international design brands. During the visit you will learn about the manifest, standard, systems and ideology behind Artek company and products.

<https://www.artek.fi/en/company/about>





# DAY 3 - DINNER AT RESTAURANT SAVOY

Overlooking the gorgeous Esplanade Park in the heart of Helsinki, Savoy has served guests for more than 80 years. The restaurant gives the guests a magnificent bird view of the city, due to its 8<sup>th</sup> floor, rooftop location. Savoy has always brought people together: artists, intellectuals and businesspeople as well as families, friends and lovers.

The Savoy **interior was designed by architects Aino and Alvar Aalto** who brought their human-centered and functional touch to every detail in the restaurant. Opening in June 1937, the interior was rich in various species of wood and lush planting, and the use of fabrics was vivid. The atmospheric dining hall was framed by terraces on three sides. The interior showed the Aaltos' preference for welcoming and comfortable furniture and their sensitivity towards high-quality natural materials. In 2019-2020, the restaurant was re-designed by Ilse Crawford and Studioilse and renovated in co-operation with Artek, Helsinki City Museum and the Alvar Aalto Foundation. Savoy's food is Finnish-French, with a slight Russian touch. The wine cellar is one of the largest in the country.

Below the main restaurant floor on the 8<sup>th</sup> floor, the 7<sup>th</sup> floor of Savoy was designed for private dining, business meetings and events. The 7<sup>th</sup> floor consists of a ballroom and private meeting rooms that can be modified for various purposes depending on the occasion and the number of guests.

Capacity **10-60** pax (only sitting)

<https://savoyhelsinki.fi/en>







# DAY 4 - MUSEUM OF FINNISH ARCHITECTURE WITH TIMO TUOMI

**The Museum of Finnish Architecture** is an architectural museum in Helsinki, Finland. Established in 1956, it is the second oldest museum of its kind (after Moscow) devoted specifically to architecture. The museum is housed in a neo-classical building, designed by architect *Magnus Schjerfbeck* and completed in 1899. The museum has large collections of drawings, photographs and architectural scale models. It also has its own library and bookstore. The museum offers Finnish and international touring exhibitions and a permanent exhibition on 19th Century Finnish Architecture.

The permanent exhibition explores the history of building in the 20th century against a background of Finnish society, considering economic, political and technological developments. These factors have always influenced not only the volume of building but also the architectural shapes. Phenomena connected with construction are viewed from a broad perspective, and from larger to smaller; from urban planning to façade materials and interior decoration.

**The Archive of the Museum of Finnish Architecture**, is specialized in modern Finnish architecture. Its collections also include hundreds of the original drawings of Eliel Saarinen

<https://www.mfa.fi/en/frontpage/>





## DAY 4 - ELIEL SAARINEN – HOME & ATELIER HVITTRÄSK

Hvitträsk was a joint project of young architects Eliel Saarinen, Armas Lindgren and Herman Gesellius of the Gesellius–Lindgren–Saarinen Architects. Together they created the atelier home to Kirkkonummi, 25 kilometres west from Helsinki. Hvitträsk was designed and constructed at the time when most of the top artists in Finland built countryside atelier homes.

The national romantic style atelier home was planned to be a complete art-work. Some of the most famous decorators and artists of the time implemented interior decorations to the house. The construction started in 1901 and Hvitträsk was completed in 1903. The spacious atelier was situated in between the two wings of the main house. Eliel Saarinen's family housed the southern wing and Armas Lindgren's family housed the northern wing. A separate building 'Lilla Villan' [Little Villa] was built for Herman Gesellius and his sister, textile artist Loja Gesellius.

The plans for various buildings, including the Finnish National Museum and Helsinki Central Railway Station, were conceived in the Hvitträsk studio.

The architectural practice Gesellius–Lindgren–Saarinen lasted only two years after Hvitträsk was completed. Armas Lindgren moved out of Hvitträsk in 1905.

The northern wing was destroyed in fire in 1922. Eliel Saarinen's family moved to the USA in 1923 but they kept Hvitträsk as their residence in Finland for decades. The years 1949–1968 Hvitträsk was owned by businessman Rainer Vuorio and his wife Anelma Vuorio, who refurbished and modernised the building. After Vuorios' bankruptcy in 1968, the bank Kansallis-Osake-Pankki sold Hvitträsk to the Gerda and Salomo Vuorio Foundation. Hvitträsk was opened as a museum in 1971 after the foundation had refurbished the building. Since the year 1981 Hvitträsk has been owned by the state.





# DAY 4 - YRJÖ KUKKAPURO'S ATELIER HOME

Yrjö Kukkapuro is one of our most internationally renowned and award-winning furniture designers and one of the most significant modernists in Finnish furniture design. The design work of Kukkapuro is based on both aesthetic and functional innovation, user experience and ergonomics.

During his extraordinarily long career of over 60 years, Yrjö Kukkapuro has created modernistic furniture for the era, which time has proven to be modern classics. Objects designed by Kukkapuro are on display in permanent exhibitions at the Museum of Modern Art in New York and the Victoria and Albert Museum in London.

Kukkapuro's career in design spans the years from mid-50's to the present. These decades have provided several collections whose design language is always coherent and functional. Collections range from the Moderno family (1956) to the picturesque CNC-machined art series. Office chairs of the Plaano, Fysio, Sirkus and Funktus series are ergonomic products that have been manufactured in long series since the 80's and 90's, and they can be found in banking floors, airfields and auditoriums around the world. The plastic chair period with pop art colours lasted about 10 years, from the 60's to 1973. The oil crisis was a wake-up call into ecological thinking for Kukkapuro, launching a 30-year period of composite plywood design.

<https://www.elledecor.com/it/best-of/a42674040/inside-the-home-studio-of-yrjo-kukkapuro-perfect-example-spontaneous-architecture/>



# DAY 4 – VISIT TO U.S. EMBASSY IN HELSINKI

Arrival for a visit to the U.S. Embassy in Helsinki as guests of Douglas T. Hickey, U.S. Ambassador to Finland, and his wife Dawn Ross. The Embassy was designed by Moore Ruble Yudell (the firm headed by BALT board member, Buzz Yudell) with landscaping by Sasaki.

After the visit, bus transfer to hotel and time for rest. Later, bus transfer to Temppeliaukio “Rock” Church for a visit and concert followed by dinner at restaurant Nokka.





## DAY 4 - TOUR AT TEMPPELIAUKIO CHURCH with miniconcert

Temppeliaukio “Rock” Church was designed by Timo and Tuomo Suomalainen as part of the natural bedrock. Excavated directly into solid rock, the Temppeliaukio church is situated in Töölö district.

The church hall is covered with a dome, lined with copper and supported on the rock walls by reinforced concrete beams. The interior walls are of rugged rock and rubble wall. Before noon, the light spreads from the row of windows surrounding the roof periphery to the altar wall, where an ice-age crevice serves as the altarpiece. Due to its excellent acoustics the church is a popular venue for concerts.



# DAY 4 - DINNER AT RESTAURANT NOKKA

A huge anchor and propeller mark out this harbourside warehouse and inside, three high-ceilinged rooms juxtapose brick with varnished wood. A glass wall allows you to watch farm ingredients being prepared in a modern Finnish style.

Restaurant Nokka, currently led by head chef Ari Ruoho, is the only restaurant in Finland with personal, first-hand knowledge of the production methods and conditions used by the restaurants VIPs - Very Important Producers.

The restaurant is committed to serving only the purest seasonal ingredients from Finnish forests and waters: game, fish, berries, mushrooms, plants and herbs. Nokka only uses sustainably grown, organic produce and meats from carefully selected small Finnish producers with whom they have developed close relationships for years.

Every member of Nokka team is ready to do everything in their power to build a memorable experience that includes everything: food, beverages, service and the idyllic venue.

<https://nokkahelsinki.fi/>



Ma-Pe  
11.30-14.30  
10€





# DAY 5 - MARIMEKKO FLAGSHIP STORE IN HELSINKI

## Marimekko Flagship Store

Marimekko is a Finnish lifestyle design company renowned for its original prints and colors. The company's product portfolio includes high-quality clothing, bags, and accessories, as well as home décor items ranging from textiles to tableware. When Marimekko was founded in 1951, its unparalleled printed fabrics gave it a solid and unique identity. Sustainability is part of Marimekko's DNA, and sustainability considerations are part of the daily work of everyone at Marimekko. Their design philosophy and operations have always been based on a sustainable approach: they are known to provide their customers with timeless, functional, and durable products that bring them long-lasting joy and that they will not want to throw away.

[www.marimekko.fi](http://www.marimekko.fi)



# DAY 5 - AMOS REX ART MUSEUM

Amos Rex is a meeting place for art and urban culture, consisting of new underground exhibition spaces, the old Lasipalatsi building ("glass palace") from 1936 and its Bio Rex cinema, as well as a vibrant event forum on Lasipalatsi Square, which serves as the roof of the exhibition hall.

The Amos Rex museums exhibition programme will extend from the newest, often experimental, contemporary art to 20th-century Modernism and ancient cultures. Amos Rex aims to present captivating and ambitious art refreshingly and exuberantly. A permanent exhibition with Sigurd Frosterus's post-impressionist art collection is also on display. The gallery is housed in an extremely innovative space, and the exhibitions themselves are very ambitious. In March 2020 the Amos Rex Art Museum won the prestigious LCD (Leading Culture Destination) Award for New Cultural Destination of the Year – Europe.

Most of the museum space is situated in new underground space designed by JKMM Architects and built beneath a square. The rest of the museum comprises the beautifully restored Lasipalatsi with its cinemas and the adjacent square where you can look down into the galleries below. After guided tour lunch is served at restaurant Lasipalatsi (or similar) and after lunch it is time to continue to the airport and start the home trip.

We hope you have enjoyed your stay in Finland and will come back soon again!







AMOS  
Rex





# DESTINATION HELSINKI / Saturday, June 15, 2024 - Wednesday, June 19, 2024

Participation in Destination Helsinki is at the invitation of the BALT board. By participating, you are enabling BALT's activities which include, in significant part, work in support of the British Architectural Library at the Royal Institute of British Architects in London. The Library holds one of the largest and most comprehensive collections of architectural materials in the world. Over four million items together represent a unique body of knowledge that is wide-ranging and truly global in scope.

Included in the price of the trip is four night's accommodation at the Hotel St. George, a five star luxury hotel in the heart of Helsinki, as well as local transportation, museum and guide fees, and all meals including breakfasts, lunches, and dinners as well as nightly cocktails as outlined in the trip itinerary. Wine will be served with dinner. Not included is air transportation, airport transfers, additional food and beverages, and all items not outlined in the itinerary. Upgrades and additional hotel services may be arranged directly with the hotel at your own expense.

The total cost of the trip is US\$5,875 per person (plus a US\$520 supplement for single occupancy as shown on the accompanying Booking Form) which includes a US\$1,000 contribution to BALT. (BALT is a non-profit organization registered under section 501(c)(3) of Title 26 of the United States Code. As such, charitable contributions made to BALT are deductible for federal income tax purposes for those subject to U.S. taxation in accordance with the requirements of the Code.)

# DESTINATION HELSINKI / Saturday, June 15, 2024 - Wednesday, June 19, 2024

To confirm your place, BALT requires a non-refundable deposit of US\$1,500 per person. There is a limit of 20 participants, so please secure your place at your earliest convenience. Full payment of the remaining cost of the trip is required no later than Friday, March 1, 2024.

The itinerary involves extensive walking, and some venues may not be fully accessible to those with reduced mobility. If you have concerns, please bring them to the attention of BALT. Every attempt will be made to adapt your itinerary so that you can participate as fully as possible in the trip's activities. All participants are required to report any medical condition that may need specialist attention.

All participants must arrange their own travel insurance, including medical evacuation and repatriation coverage. BALT requires proof of insurance coverage with emergency contact details to confirm your place. Insurance is not provided by BALT.

The itinerary is subject to change without notice. Should circumstances require BALT to cancel any of the visits or activities outlined in the accompanying materials, suitable alternatives will be sought. Should the trip itself be cancelled or postponed, there will be certain costs that are non-refundable. BALT strongly recommends including trip interruption and cancellation coverage in your insurance planning.



# DESTINATION HELSINKI / Saturday, June 15, 2024 - Wednesday, June 19, 2024

You can find the registration form on the next page. Please provide details as they appear in your passport. Please use one form per participant. The information provided on this form is strictly confidential and will only be used as needed for your participation in Destination Helsinki. Please return your completed form to Wayne Chen, Executive Assistant to the Board of the British Architectural Library Trust to

E-mail: [exec.assistant@thebaltrust.org](mailto:exec.assistant@thebaltrust.org)

A deposit of US\$1,500 per person is required to confirm your booking. Payment of the remaining US\$4,375 (plus a supplement of US\$520 for single occupancy, if applicable) is due no later than Friday, March 1, 2024. The total cost of the trip includes a US\$1,000 contribution per person to BALT. It is requested that both initial and final payments for Destination Helsinki be made by wire transfer so that BALT's accounting firm, KRA LLC, can more expeditiously track payments.

However, for those who wish to make payment by check, please make the check payable to the British Architectural Library Trust and send it directly to KRA's office.

## Payment by Wire Transfer

Bank Name:	First Republic Bank
Bank Address:	111 Pine Street San Francisco, California 94111
SWIFT Code:	FRBBUS6S
ABA (Routing) Number:	321 081 669
Account Number:	80009904014
Account Name:	British Architectural Library Trust
Reference:	Destination Helsinki 2024

## Payment by Check

Payment Address:	British Architectural Library Trust c/o KRA LLC 100 Crosby Street, Suite 301 New York, New York 10012
Payee:	British Architectural Library Trust
Note:	Destination Helsinki 2024

# DESTINATION HELSINKI / BOOKING FORM

Title \_\_\_\_\_

Forename(s) \_\_\_\_\_

Surname \_\_\_\_\_

Mobile \_\_\_\_\_

E-Mail \_\_\_\_\_

Address \_\_\_\_\_

Nationality \_\_\_\_\_

Passport Number \_\_\_\_\_

Date of Birth \_\_\_\_\_

Insurance Provider \_\_\_\_\_

Policy Number \_\_\_\_\_

Insurance Emergency Contact \_\_\_\_\_

Next of Kin \_\_\_\_\_

Relationship to You \_\_\_\_\_

Emergency Telephone Contact \_\_\_\_\_

Special Dietary Requirements \_\_\_\_\_

Allergies \_\_\_\_\_

Mobility Requirements \_\_\_\_\_

Medical Conditions Which May Require Specialist Attention

\_\_\_\_\_



BALT expresses its appreciation to Elämys DMC, the respected Finnish travel company that worked with BALT in organizing Destination Helsinki, and particularly to Mari Viitanen (from Elämys DMC) and Sari Saarinen (from Saarinen Tours) and is grateful to the many institutions and experts who shared their expertise to help plan the trip's activities and itinerary.

**BALT Contact Information:**

The British Architectural Library Trust  
120 Broadway, 20th Floor  
New York, New York 10271, USA  
Website: [thebaltrust.org](http://thebaltrust.org)

**Elämys DMC contact Information:**

Elämys DMC  
Hämeentie 31  
00500 Helsinki, FINLAND  
Website: [elamysdmc.com](http://elamysdmc.com)

**Saarinen Tours contact information:**

Website: [saarinentours.com](http://saarinentours.com)

BALT

BRITISH ARCHITECTURAL LIBRARY TRUST



Saarinen Tours